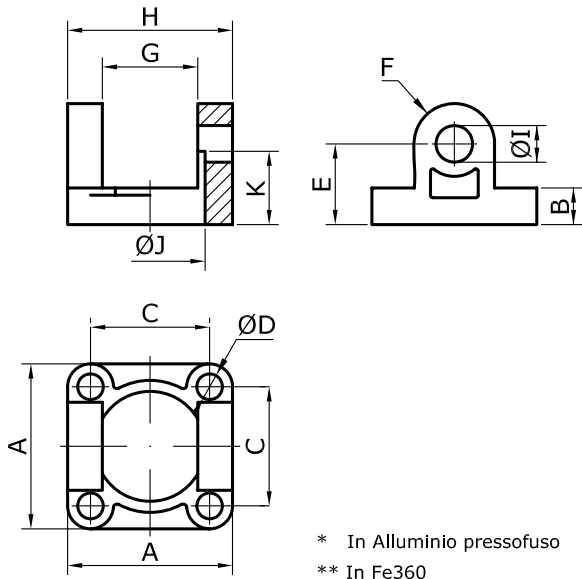


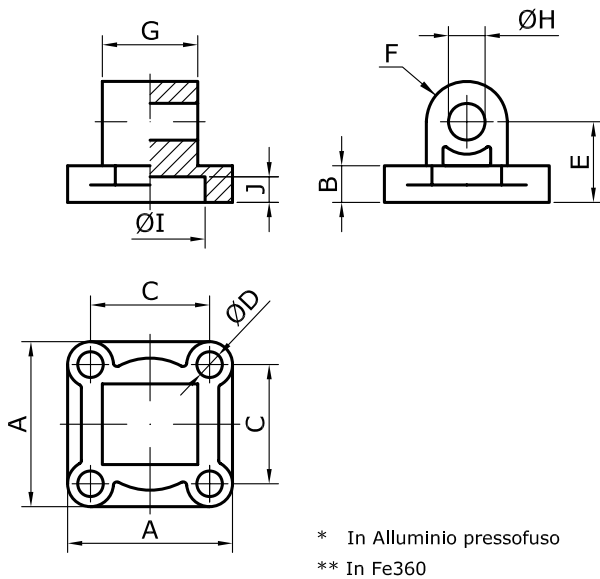
CERNIERA FEMMINA



DISPONIBILE ANCHE NELLA VERSIONE CON BOCCOLA

CODICE	A ⁺¹ ₀	B	C ^{+0,2}	ØD	E ^{+0,5} ₀	F	G	H	ØI _(H11)	ØJ _(B13)	K
CFIS032	45	10	32,5	7	22	11	26	45	10	30	20
CFIS040	52	10	38	7	25	13	28	52	12	35	22
CFIS050	65	12	46,5	9	27	13	32	60	12	40	29
CFIS063	75	12	56,5	9	32	17	40	70	16	45	29
CFIS080	95	16	72	11	36	17	50	90	16	45	-
CFIS100	115	16	89	11	41	21	60	110	20	55	-
CFIS125B	140	20	110	14	50	26	70	130	25	60	-
CFIS160B	180	20	140	18	55	31	90	170	30	65	-
CFIS200B	220	25	175	18	60	31	90	170	30	75	-
CFIS250B	280	25	220	22	70	40	110	200	40	90	-
CFIS320B	350	30	270	26	80	45	120	220	45	110	-

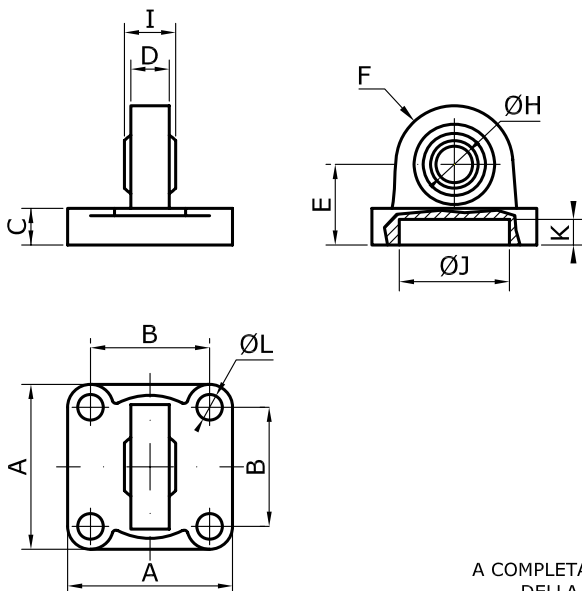
CERNIERA MASCHIO



DISPONIBILE ANCHE NELLA VERSIONE CON BOCCOLA

CODICE	A ⁺¹ ₀	B	C ^{+0,2}	ØD	E ^{+0,5} ₀	F	G	ØH _(H11)	ØI _(B13)	J ^{+0,2}
CMIS032	45	10	32,5	7	22	11	26	10	30	7
CMIS040	52	10	38	7	25	13	28	12	35	7
CMIS050	65	12	46,5	9	27	13	32	12	40	7
CMIS063	75	12	56,5	9	32	17	40	16	45	7
CMIS080	95	16	72	11	36	17	50	16	45	9
CMIS100	115	16	89	11	41	21	60	20	55	9
CMIS125B	140	20	110	14	50	26	70	25	60	9
CMIS160B	180	20	140	18	55	31	90	30	65	9
CMIS200B	220	25	175	18	60	31	90	30	75	11
CMIS250B	280	25	220	22	70	40	110	40	90	11
CMIS320B	350	30	270	26	80	45	120	45	110	11

CERNIERA MASCHIO A SNODO SFERICO



CODICE	A ⁺¹ ₀	B ^{+0,2}	C	D	E ^{+0,5} ₀	F	ØH _(H7)	I	ØJ _(B13)	K ^{+0,2}	ØL
CMSS032	45	32,5	10	10,5	22	16	10	14	30	7	7
CMSS040	52	38	10	13	25	19	12	16	35	7	7
CMSS050	65	46,5	12	13	27	19	12	16	40	7	9
CMSS063	75	56,5	12	16	32	24	16	21	45	7	9
CMSS080	95	72	16	16	36	24	16	21	45	9	11
CMSS100	115	89	16	19	41	30	20	25	55	9	11
CMSS125	140	110	20	22	50	36	25	31	60	9	14
CMSS160	180	140	20	25	55	36	30	37	65	9	18
CMSS200	220	175	25	25	60	36	30	37	75	11	18
CMSL050	65	46,5	12	16	27	21	16	21	40	6	9
CMSL080	95	72	16	19	36	27	20	25	45	9	11