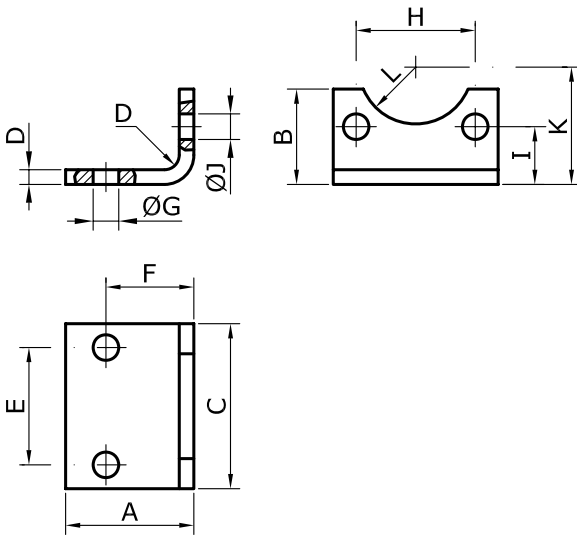
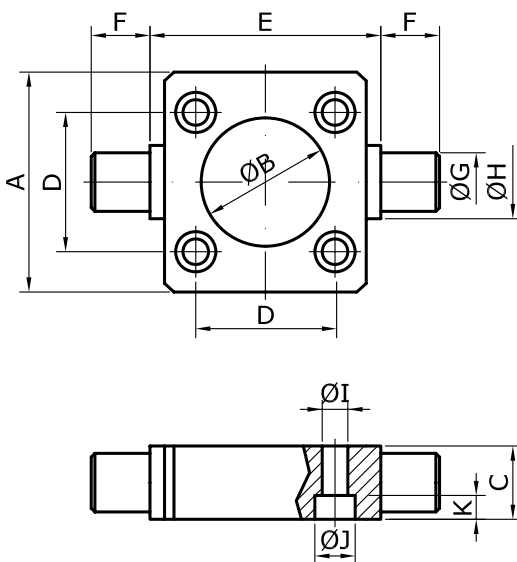


PIEDINO

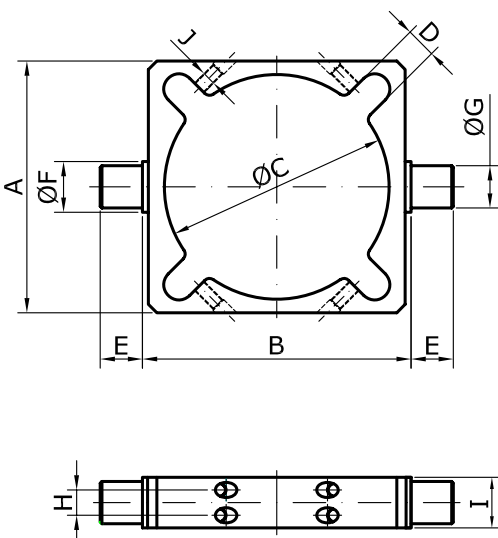


CODICE	A	B	C	D	E	F	ØG	H	I	ØJ	K	L
PBIS032	35	26	45	4	32	24	7	32,5	15,75	7	32	15,5
PBIS040	43	27	52	4	36	28	9	38	17	7	36	18
PBIS050	47	35	65	4	45	32	9	46,5	21,75	9	45	20,5
PBIS063	47	35	75	6	50	32	9	56,5	21,75	9	50	23
PBIS080	61	46	95	6	63	41	12	72	27	11	63	23
PBIS100	66	48	115	6	75	41	14	89	26,5	11	71	28
PBIS125	60	80	140	8	90	45	16	110	35	13	90	31
PBIS160	80	100	180	10	115	60	18	140	45	17	115	33
PBIS200	100	120	220	12	135	70	22	175	47,5	17	135	38
PBIS250	110	110	270	20	165	75	28	220	55	21	165	46



FLANGIA ANT./POST. CON PERNI

CODICE	A	ØB (B13)	C	D $\pm 0,2$	E (h14)	F (h14)	ØG (e9)	ØH	ØI	ØJ	K
FPIS032	50	30	20	32,5	50	12	12	15	7	11	6,5
FPIS040	60	35	20	38	63	16	16	20	7	11	6,5
FPIS050	70	40	20	46,5	75	16	16	20	9	15	8,5
FPIS063	80	45	30	56,5	90	20	20	25	9	15	8,5
FPIS080	100	45	30	72	110	20	20	25	11	18	10,5
FPIS100	130	55	30	89	132	25	25	30	11	18	10,5
FPIS125	150	60	30	110	160	25	25	30	13	20	12,5
FPIS160	200	65	40	140	200	32	32	40	17	25	16,5
FPIS200	250	75	40	175	250	32	32	40	17	25	16,5



CERNIERA INTERMEDIA REGOLABILE

CODICE	A	B (h14)	ØC	D	E (h14)	ØF	ØG (e9)	H	I	J
CSIS032K	64	50	37	11	12	-	12	11	20	M5
CSIS040K	70	63	45,5	11	16	-	16	11	20	M5
CSIS050K	80	75	55,5	14	16	-	16	11	20	M5
CSIS063K	90	90	68,5	14	20	-	20	19	30	M6
CSIS080K	120	110	86,5	16	20	-	20	19	30	M6
CSIS100K	145	132	107	16,5	25	-	25	25	40	M8
CSIS125K	149	160	133,5	18	25	30	25	15	30	M8
CSIS160K	200	200	172,5	26,5	32	40	32	20	40	M10
CSIS200K	250	250	213	27	32	40	32	20	40	M10